

Title of Your Paper

Jian-Guo Zhao^{a,*}, Jason FT Mak^{a,b}, David Jones^b

^a*Name of institution of the first author, Street name, City, State, post code, Country*

^b*Name of institution of the second author, Street name, City, State, post code, Country*

Abstract

A concise and factual abstract, of around 100 words, 11pt Times New Roman is required. The abstract should state briefly the purpose of the research, the principal results and major conclusions. It must be able to stand alone, references should be avoided. Non-standard or uncommon abbreviations should be avoided.

Keywords: Heading; Introduction; Times New Roman; Number

Note:

- Abstract: Using British spelling and avoiding general and plural terms and multiple concepts (avoid, for example, “and”, “of”). List 4-6 keywords.
- Leave one blank line after the Abstract. For papers liked to be indexed by EI, key words should be the words included in EI Thesaurus (please visit the website: www.engineeringvillage.com). (11pt Times New Roman)
- Length of paper should range from 3,000 to 6,000 words.

1 Introduction

As you can see for the title of the paper you must use 16pt, Centered, Bold, Times New Roman. Leave one blank line and then type Authors' Name (12pt Times New Roman, Bold, centered), Department, University, Address, Country (11pt Times New Roman, centered). Then you must type e-mail address of the corresponding author (11pt Times New Roman, centered).

The heading of each section should be printed in small, 14pt, left justified, bold, Times New Roman. You must use numbers 1, 2, 3, ... for the sections' numbering and not Latin numbering (I, II, III, ...).

*Corresponding author.

Email address: zhaojianguo@yahoo.com (Jian-Guo Zhao).

2 Problem formulation

Please, leave one blank line between successive sections as here.

Equations. Equations (refer with: Eq. 1, Eq. 2, ...) should be centered. There should be one line of space above the equation and one line of space below it before the text continues. The equations have to be numbered sequentially, and the number put in parentheses at the right-hand edge of the text. Equations should be punctuated as if they were an ordinary part of the text. Punctuation appears after the equation but before the equation number, e.g.

$$c^2 = a^2 + b^2 \quad (1)$$

2.1 Subsection

When including a subsection you must use, for its heading, small letters, 12pt, left justified, bold, Times New Roman as here.

2.1.1 Sub-subsection

When including a sub-subsection you must use, for its heading, small letters, 11pt, left justified, bold, Times New Roman as here.

3 Problem solution

Tables. Tables (refer with: Table 1, Table 2, ...) should be presented as part of the text, but in such a way as to avoid confusion with the text. A descriptive title should be placed above each table. The caption should be self-contained and placed below or beside the table. Units in tables should be given in square brackets [meV]. If square brackets are not available, use curly meV or standard brackets (meV). Figures. Do NOT insert the figures in tables.

Figures (refer with: Fig. 1, Fig. 2, ...) also should be presented as part of the text, leaving enough space so that the caption will not be confused with the text. The caption should be self-contained and placed below or beside the figure. Generally, only original drawings or photographic reproductions are acceptable. Only very good photocopies are acceptable. Utmost care must be taken to insert the figures in correct alignment with the text. Half-tone pictures should be in the form of glossy prints. If possible, please include your figures as graphic images in the electronic version. For best quality the pictures should have a resolution of 300 dpi (dots per inch).

Table 1: The sample of table

Type	Time (h)	Results
T1	1	Good
T2	3	Excellent
T3	5	Bad
T4	7	Very bad

If your paper deviates from these specifications, your paper will be rejected immediately. When citing references in the text of the abstract, you should type the corresponding number in square brackets as shown at the end of this sentence [1].

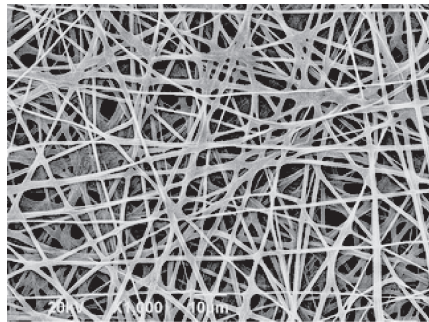


Fig. 1: SEM of sample.

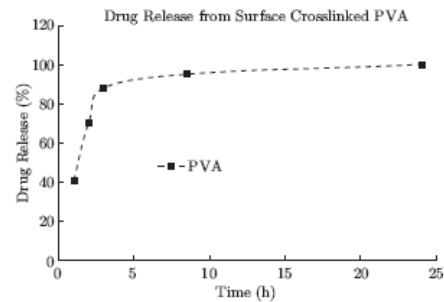


Fig. 2: Example 2.

Page Numbers. Do NOT print page numbers.

Literature References. References are cited in the text just by square brackets [1]. (If square brackets are not available, slashes may be used instead, e.g. /2/.) Two or more references at a time may be put in one set of brackets [3,4]. The references are to be numbered in the order in which they are cited in the text and are to be listed at the end of the contribution under a heading References, see our example below [5-10].

4 Conclusion

Please, follow our instructions faithfully, otherwise you have to resubmit your full paper. This will enable us to maintain uniformity in the journal. Thank you for your cooperation and contribution.

5 Acknowledgement

The authors wish to acknowledge the ABC program.

Attention: Please follow the reference format strictly, especially the punctuations.

References

- [1] Driessens FCM, Boltong MG, Bermudez O, Planell JA. Formulation and setting times of some calcium orthophosphate cements: a pilot study. *J Mater Sci: Mater Med* 1993; 4: 503-508.
- [2] Nancollas H. In vitro studies of calcium phosphate crystallisation. In: Mann S, Webb J, Williams RJP, editors. *Biomaterialization. Chemical and biochemical perspectives*. New York: VCH, 1989. p. 157-182.
- [3] Brown W, Chow LC. Combinations of sparingly soluble calcium phosphates in slurries and paste as mineralizers and cements. US Patent No. 4612053, 1986.
- [4] Information on <http://www.weld.labs.gov.cn>